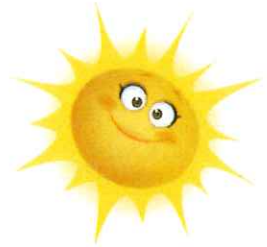


# MAY 2019



Clay Senior Activity Center

681-0238

Beth Petty, Director

Mon	Tue	Wed	Thu	Fri
<p><b>Center is open Monday -Friday 9:00-1:00</b></p>		<p><b>1</b></p> <p><b>Happy May Day! Let's play!</b></p>	<p><b>2</b></p> <p><b>Dominos</b></p>	<p><b>3</b> <b>Faith Lutheran Yard Sale 9:30</b></p> <p><b>GAMES</b></p>
<p><b>6</b></p> <p><b>All games</b></p>	<p><b>7</b></p> <p><b>Wii Bowling</b></p>	<p><b>8</b></p> <p><b>Nutritional Info: Fresh Beans</b></p>	<p><b>9</b></p> <p><b>9 Card Golf</b></p> <p><b>Canasta</b></p> <p><b>Bingo</b></p> <p><b>Rook</b></p>	<p><b>10</b></p> <p><b>Rummikub</b></p>
<p><b>13</b> <i>Mother's Day Celebration</i></p>	<p><b>14</b></p> <p><b>Games and More games!</b></p>	<p><b>15</b></p> <p><b>KARAOKE</b></p> <p>George Sokol</p>	<p><b>16</b></p> <p><b>Golf &amp; Canasta</b></p>	<p><b>17</b> <b>Nutritional Info:</b></p> <p><b>Fiber and Potassium</b></p>
<p><b>20</b></p> <p><b>Bingo and Bridge</b></p>	<p><b>21</b> <b>Educational Info: Sun Safety</b></p> <p>Mardis Howell</p>	<p><b>22</b> <b>Out to lunch</b></p> <p>10:30 1:00</p> <p><b>Gardendale</b></p>	<p><b>23</b> <b>Puzzles, anyone?</b></p> <p>Audie Barrett</p>	<p><b>24</b></p> <p><b>Rook</b></p> <p>May 26: Carolyn Godwin</p>
<p><b>27</b> <b>Center Closed!</b></p>	<p><b>28</b> <b>Don't you want to play UNO?</b></p> <p>Ruth Spitzer</p>	<p><b>29</b></p> <p><b>Nutritional Info: Potato Myths Busted!</b></p>	<p><b>30</b></p> <p>Joan LaFramboise</p>	<p><b>31</b> <b>Birthdays In Orange</b></p> <p>Martha Tolbert</p>